

LUOYANG RUIKE TECHNOLOGY PRODUCT MANUAL

洛阳瑞克科技产品手册

feeder/ jaw crusher/cone crusher/impact crusher/roll crusher/sand making machine/
vibrating screen/mobile crushing plant

给料机/颚破/圆锥破/反击破/辊破/制砂机/振动筛/轮胎移动站

■ 公司简介

COMPANY PROFILE

Luoyang Ruike Technology is a wholly-owned subsidiary of Dahua Group, with a registered capital of 100 million CNY. Relying on the good development platform of Dahua Group, after several years of hard work, Luoyang Ruike has gradually developed into a comprehensive industrial enterprise integrating the design, production, sales and after-sales of mining equipment and accessories. Now it can undertake production lines of building materials or other industries of 100~2000 tons per hour. It is a modern production and processing enterprise integrating the business of host equipment, centralized control, transportation and production and installation of non-standard parts, and was identified as a high-tech enterprise in December 2019, passed ISO9001 quality management system certification, ISO14001 environmental management system certification, and ISO45001 Occupational Health and Safety Management system certification.

As a complete set of crusher screening washing separation equipment and solution supplier, the company's products mainly include feeder, European version of jaw crusher, single cylinder hydraulic cone crusher, multi-cylinder hydraulic cone crusher, European version of impact crusher, high efficiency roll crusher, sand making machine, vibrating screen, tire moving station, etc.

CONTENTS

■ 公司简介	01
COMPANY PROFILE	
■ 公司荣誉及资质	03
COMPANY HONOR AND QUALIFICATION	
■ RC系列颚式破碎机	05
RC SERIES JAW CRUSHER	
■ RGP系列单缸圆锥破碎机	07
RGP SERIES SINGLE CYLINDER CONE CRUSHER	
■ RGPS系列单缸圆锥破碎机	09
RGPS SERIES SINGLE CYLINDER CONE CRUSHER	
■ RHP系列多缸圆锥破碎机	11
RHP SERIES MULTI CYLINDER CONE CRUSHER	
■ RVS1系列立轴式破碎机	13
RVS1 SERIES SAND MAKING MACHINE	
■ RNP系列反击式破碎机	15
RNP SERIES IMPACT CRUSHER	
■ 2PG系列辊式破碎机	16
2PG SERIES ROLL CRUSHER	
■ ZSW系列振动给料机	17
ZSW SERIES VIBRATING FEEDER	
■ YA 系列振动筛	18
YA SERIES VIBRATION SCREEN	
■ ZKX系列直线筛	19
ZKX SERIES LINE VIBRATING SCREEN	
■ ZG 系列电机振动给料机	20
ZG SERIES MOTOR VIBRATING FEEDER	
■ YD系列轮胎式移动破碎站	21
YD SERIES MOBILE CRUSHING PLANT	
■ 砂石骨料加工系统成套方案	22
SANDSTONE AGGREGATE PROCESSING SYSTEM SCHEME	
■ 案例展示	24
CASES DEMONSTRATION	

OBTAINED A NUMBER OF CERTIFICATIONS AND PATENTS

QUALITY ASSURANCE, SAFETY REST ASSURED





RC SERIES JAW CRUSHER

Product overview

RC series jaw crusher is a new type jaw crusher developed by our company based of absorbing and digested the advanced technology of jaw crusher at home and abroad. With unique structure and superior performance, it is the preferred equipment for crushing all kinds of hard and highly corrosive

Application field/For the material

Application field:Jaw crusher (jaw broken) is widely used in mining, metallurgy, building material, highway, railway, water conservancy and chemical industry etc. Various coarse crushing all kinds of materials and broken

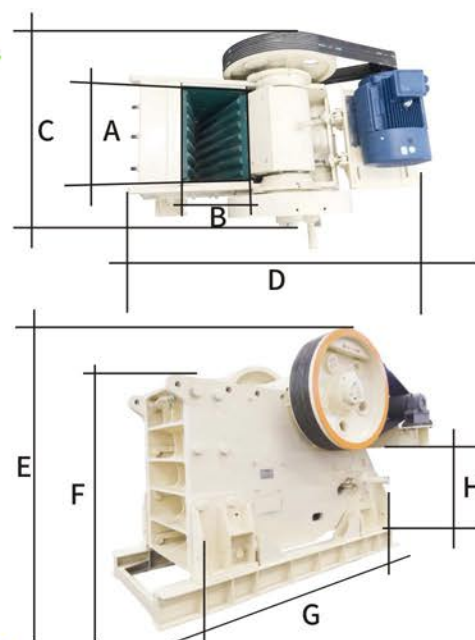
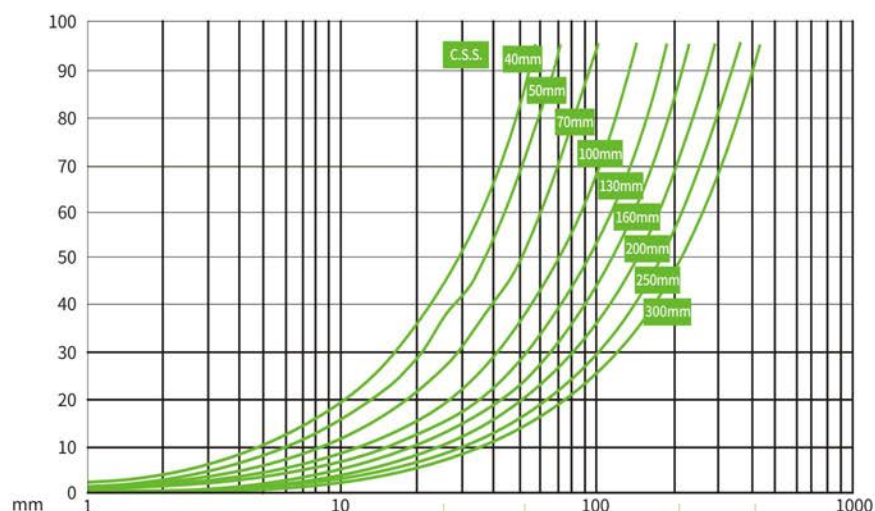
For the material:Limestone, granite, marble, basalt, iron ore, pebble, shale, bluestone, coal, construction waste and so on



Product advantage

- Heavy design, suitable for all kinds of sand aggregate and mineral processin
- Large size bearing, bearing more, longer service life
- Three different installation structures are suitable for a wide range of working conditions
- Wedge type discharge adjustment structure, adjustment is more quick and convenient
- Large gnawing angle, reasonable stroke, high speed, so that the working output is greater
- The main engine is integrated with the motor, and connected with the foundation through the rubber damping pad

Grain size characteristic curve



Technical parameters

		RC80 Fission/Welded	RC96 Fission	RC100 Fission	RC106 Fission	RC110 Fission	RC125 (Fission)	RC140 Fission	RC160 Fission	RC200 Fission
Feed opening width (mm)		800	930	1000	1060	1100	1250	1400	1600	2000
Feed opening depth(mm)		510	580	760	700	850	950	1070	1200	1500
Motor power(kw)		75	90	110	110	160	160	200	250	400
Speed(rpm)		350	330	260	280	230	220	220	220	200
Feeding size (mm)	C.S.S (mm)	Tons/Hour	Tons/Hour	Tons/Hour	Tons/Hour	Tons/Hour	Tons/Hour	Tons/Hours	Tons/Hour	Tons/Hour
0~60	40	65~85								
0~75	50	80~95								
0~90	60	95~125	120~155							
0~105	70	115~150	140~180	150~210	155~200	190~250				
0~120	80	130~170	160~210	170~225	175~230	210~275				
0~135	90	150~195	180~235	190~245	200~260	235~305				
0~150	100	165~215	200~260	215~280	220~290	255~330	290~380			
0~185	125	210~275	250~325	265~345	280~365	310~405	350~455	385~500		
0~225	150	250~325	300~390	315~410	335~435	370~480	410~535	455~590	520~675	
0~260	175	290~380	350~455	370~480	390~510	425~550	470~610	520~675	595~775	760~990
0~300	200			420~545	445~580	480~625	530~690	590~765	675~880	855~1110
0~340	225						590~770	655~850	750~975	945~1230
0~375	250						650~845	725~945	825~1070	1040~1350
0~410	275								900~1170	1130~1470
0~450	300								980~1275	1225~1590

Note: 1、 In the table, the processing capacity is the parameter corresponding to the rock with crushing and loose density of 1.6t/m³ (stone density of 2.7t/m³)

2、 Depending on the nature of the material and the way of feeding, the handling capacity may change CSS is a closed side discharge port

3、 The measurement method is determined by the tooth shape of the jaw plate. With different tooth shape, the processing capacity and the discharge size will change

Dimensions and weight

		RC80	RC96	RC100	RC106	RC110	RC125	RC140	RC160	RC200
A	mm	800	930	1000	1060	1100	1250	1400	1680	2000
B	mm	510	580	760	700	850	950	1070	1200	1500
C	mm	1526	1755	2420	2030	2385	2800	3010	3700	4040
D	mm	2577	2880	3670	3320	3770	4100	4400	5900	6700
E	mm	1750	1460	2490	2005	2750	2980	3140	3750	4465
F	mm	1200	755	1700	1135	1940	2100	2260	2650	2800
G	mm	2100	2500	2965	2630	2820	3470	3755	4280	4870
H	mm	625	465	775	700	580	980	1050	1200	6400
Crusher weight*	kg	7700	9800	23300	18200	29500	41600	54000	82000	137200

Note: *Does not contain the optional parts of crusher

RGP SERIES SINGLE CYLINDER CONE CRUSHER

Product overview

RGP series single cylinder cone crusher is a new type of cone crusher developed by our company by absorbing and digesting domestic and foreign technologies and combining machinery, electricity and liquid. The equipment adopts high-strength cast steel frame, alloy forging spindle, high-precision spiral gear transmission structure, combined with a variety of strokes and cavity types, so that the performance and advantages of the equipment can be perfectly reflected, can be applied to a variety of hard rock in the second and third stage crushing operations, fully meet a variety of crushing needs of customers.

Application field/For the material

Application field: Widely used in metal and non-metallic mine, cement, sand, metallurgical and other industries

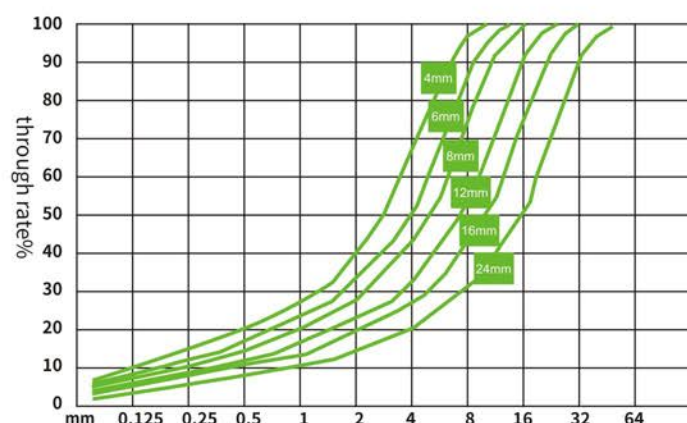
For the material: Pebble, granite, basalt, limestone, quartz, diabase, iron ore, gold, copper, etc



Product advantage

- High reliability: optimize and improve the product structure, material, processing and assembly process, so as to ensure the reliability of the use of the host
- High production efficiency: scientific and reasonable crushing chamber type, eccentric distance, moving cone pendulum frequency and lamination crushing principle combined, through large quantity, good product grain type, low energy consumption
- Wide adaptability: according to different feed and finished material size, match reasonable cavity type, adopt steel base frame or motor and host machine integrated installation, installation equipment save time, low cost
- Low operating cost: specially designed cavity type and liner material make the liner utilization rate higher, and equipped with positive pressure dustproof system to ensure that the lubricating oil inside the main engine is not polluted by dust

Grain size characteristic curve

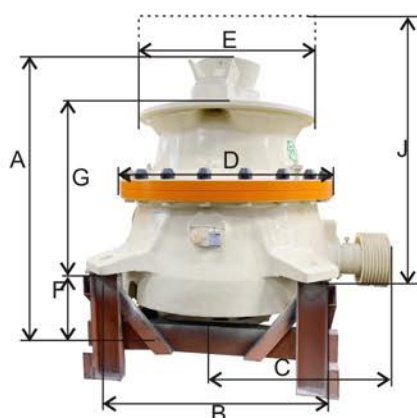
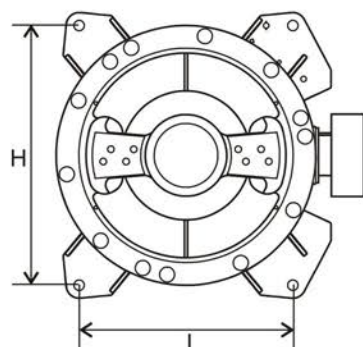


Feed opening size(mm)

MODEL	RGPI00	RGPI1	RGPI300	RGPI500	RGPI870	RGPI890
EF	40	40	40	50	88	
F	50	80	60	90	99	139
MF	100		100	130	108	149
M	130	120	130	180	184	219
MC					236	302
C	150	200	180	220	287	382
EC			260	280	350	428
EC-S				300		

Note: EF = finely type, type F = finely, MF = in cavity type, M = midplane model, MC = coarse cavity type, type C = coarse cavity, EC = coarse cavity type, EC - S = particularly bold type cavity

Product appearance and weight



Model	RGP100	RGP11	RGP300	RGP500	RGP870	RGP890
kg*(Total)	5800	10700	13400	27000	49800	76000
kg During the period of maintenance weight	1600	3000	3200	7500	/	/
Size(mm)						
A	2038	2383	2181	2771	/	/
B	1300	1649	1860	2300	/	/
C	908	1165	1401	1589	1824	1960
D	1320	1700	1820	2330	/	/
E	1040	1400	1480	1750	2507	2900
F	566	449	499	1275	1200	1720
G	1167	1513	1275	1602	/	/
H	1400	1700	1700	2275	2324	2489
I	1090	1400	1400	1676	2324	2489
J**)	2067	2477	2239	2887	3457	3590
kw, Motor power	75~90	132~160	200~250	250~355	500	750

Note:1、**):do not take parts of basic machine, with the weight of the heaviest crushing cavity are presented

2、**):From the top damping blocks to the hopper

Technical parameters(t/h)

	(length of) stroke	DISCHARGE GATE(C.S.S)							
		8mm	10mm	15mm	20mm	25mm	30mm	35mm	40mm
RGP100	16mm	40~50	45~55	60~70	80~90	85~95			
	20mm	50~55	50~60	70~80	95~105				
	25mm		55~65	75~90	105~120				
RGP11	20mm	80~100	85~105	105~125	120~145	150~170	170~190		
	25mm		100~120	130~150	160~180	180~210			
	30mm			160~180	190~210	210~230			
RGP300	25mm	100~120	110~130	135~155	160~180	190~210	210~235	240~260	
	32mm	110~130	120~150	165~195	195~225	230~260	265~295	300~330	
	40mm		150~170	205~235	245~275	290~320	325~355		
RGP500	25mm		140~160	160~180	190~210	240~250	270~290	210~330	350~370
	32mm			230~250	270~290	310~330	340~370	380~410	430~450
	40mm			290~310	320~340	380~410	430~460	480~510	
RGP870	32~80mm		202~290	236~451	254~484	288~550	311~594	340~650	380~690
RGP890	24~70mm			371~600	420~780	450~1010	500~1100	530~1300	580~1400

Note: the production capacity of less than 4% moisture content, do not contain clay, feed particle size grading, appropriate materials is less than the discharging mouth of the feeding amount is less than 10%, feeding uniformly distributed around the crushing cavity, loose material density of 1.6 t/m after the rocks when open circuit design by quantity. Under the condition of closed circuit operation, equipment capacity by 15% to 30% higher than open operation. Due to the selected device of eccentricity, crushing ratio, feeding the hardness and the grain size of feed, feed moisture content, such as hydraulic crusher production capacity will be influenced, so the specific application, please consult us further.

RGPS SINGLE CYLINDER CONE CRUSHER

Product overview

RGPS series single-cylinder cone crusher is our company to absorb and digest technology at home and abroad and combined with machine, electricity, liquid, such as research and development of a new type of cone crusher this equipment adopts high strength cast steel rack, metal forging spindle, high precision helical gear drive structure, combined with a variety of stroke and cavity model, makes possible the perfect embodiment of equipment performance and advantage, Can be applied to a variety of hard rock first stage crushing operations, fully meet the customer various crushing needs.

Application field/For the material

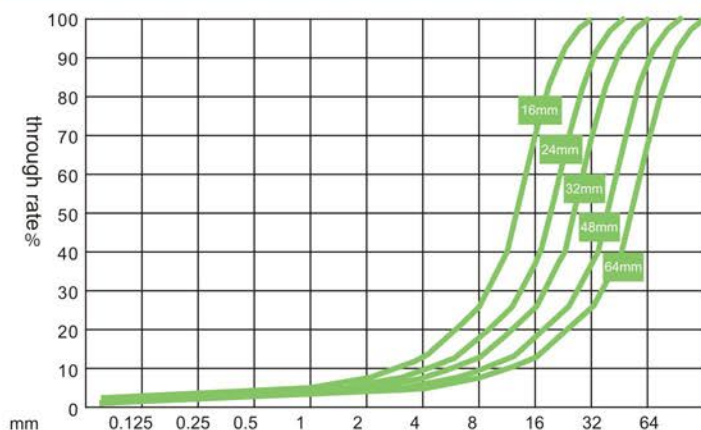
Application field: Widely used in metal and non-metallic mineral, cement, sand, metallurgical and other industries

For the material: Pebble, granite, basalt, limestone, quartz, diabase, iron ore, gold, copper, etc

Product advantage

- High reliability: optimize and improve the product structure, material, processing and assembly process, so as to ensure the reliability of the use of the host
- High production efficiency: the combination of scientific and reasonable crushing chamber type, eccentric distance, moving cone pendulum frequency and lamination crushing principle, through a larger quantity, good product grain type, low energy
- Wide adaptability: according to different feed and finished material size, match reasonable cavity type, adopt steel base frame or motor and host machine
- Low operating cost: specially designed cavity type and liner material make the liner utilization rate higher, and equipped with positive pressure dustproof system to

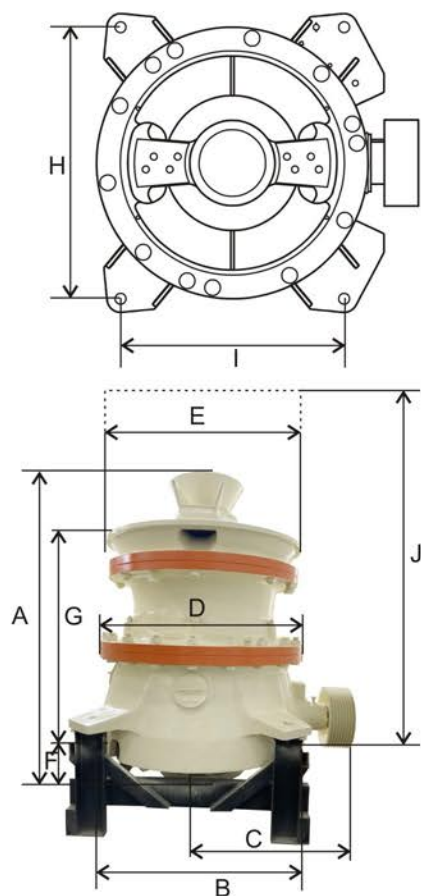
Grain size characteristic curve



Feed opening size(mm)

Crusher cavity	RGP100S	RGP300S	RGP500S
M	200		
C	250	280	380
EC		380	500

Note: M = lumen, C = coarse cavity, EC = coarse cavity type



Product appearance and weight

Model	RGP100S	RGP300S	RGP500S
Total,kg*	7350	16200	34000
During the period of maintenance weight(kg)	2500	5200	12350
Size(mm)			
A	2328	2546	3227
B	1300	1860	2300
C	908	1401	1587
D	1320	1820	2330
E	1360	1686	2330
F	566	499	1275
G	1442	1582	2100
H	1400	1700	2225
I	1090	1400	1676
J**)	2416	2550	3756
J***)	2600	3230	4420
Motor power,kw	75-90	200-250	200-355

Note:1、*):Don't take parts of basic machine, given the weight of the crushing cavity with weight

2、**):From the top damping blocks to the hopper

3、***):From shock block to the hopper with a rack on the top

Technical parameters(t/h)

RGP100S	(length of) stroke	Discharge gate(c.s.s)						
		20mm	25mm	30mm	35mm	40mm	45mm	50mm
	16mm	80~90	105~115	120~130	135~145	145~165	155~175	
	20mm		120~130	145~155	160~180	170~200	185~215	
	25mm			185~195	200~220	210~230		

RGP300S	(length of) stroke	Discharge gate(c.s.s)						
		20mm	25mm	30mm	35mm	40mm	45mm	50mm
	18mm		170~190	170~210	190~230	210~255	235~275	255~295
	25mm			220~270	255~315	290~345	320~350	330~350
	32mm				360~400	380~420	400~440	

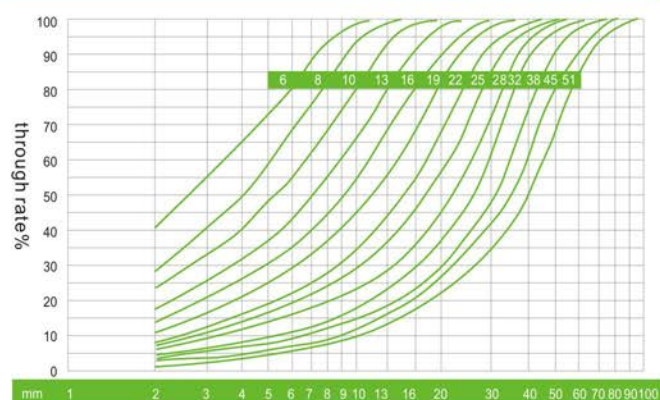
RGP500S	(length of) stroke	Discharge gate(c.s.s)						
		45mm	50mm	55mm	60mm	65mm	70mm	75mm
	18mm	300~350	325~375	375~425	400~450	425~475	450~500	500~550
	25mm		500~550	550~600	600~650	650~700	700~750	750~800
	32mm		650~700	700~750	750~800	825~875	900~950	

Note: the production capacity of less than 4% moisture content, do not contain clay, feed particle size grading, appropriate materials is less than the discharging mouth of the feeding amount is less than 10%, feeding uniformly distributed around the crushing cavity, loose material density of 1.6 t/m after the rocks when open circuit design by quantity. Under the condition of closed circuit operation, equipment capacity by 15% to 30% higher than open operation. Due to the selected device of eccentricity, crushing ratio, feeding the hardness and the grain size of feed, feed moisture content, such as hydraulic crusher production capacity will be influenced, so the specific application, please consult us further.

RHP SERIES MULTI-CYLINDER CONE CRUSHER



Grain size characteristic curve



Product overview

RHP series multi-cylinder cone crusher is a new type of multi-cylinder cone crusher which is optimized and improved by our company to absorb and digest foreign technology and combine with the actual production and use of the field. The equipment has higher production capacity, better product granule shape and higher output.

Application field/For the material

Application field: Widely used in metal and non-metallic mineral, cement, sand, metallurgical and other industries
For the material: Pebble, granite, basalt, limestone, quartz, diabase, iron ore, gold, copper, etc

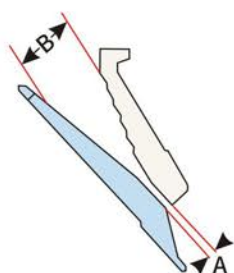
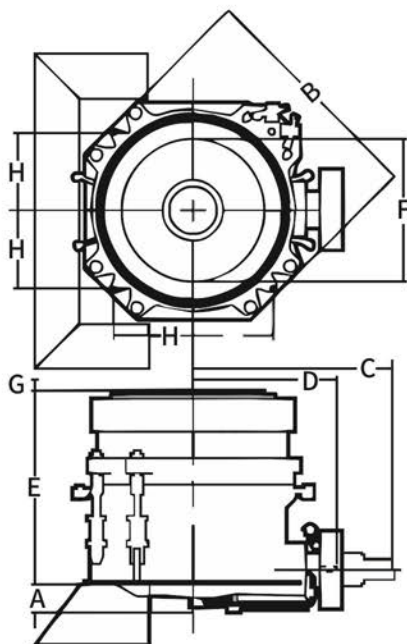
Product advantage

- Large eccentricity, high swing frequency and layer compression crushing, make the equipment high output, large crushing ratio, good grain shape
- Fixed shaft design makes the host load greater
- Reliable hydraulic protection, so that the main engine operation, more reliable, safe
- Hydraulic rotation to adjust the discharge mode, more convenient
- Special sealing method to ensure the cleanliness of the lubrication system

Technical parameters (t/h)

Model	Discharge gate(c.s.s)									
	10mm	13mm	16mm	19mm	22mm	25mm	32mm	38mm	45mm	51mm
RHP300	115~140	150~185	180~220	200~240	220~260	230~280	250~320	300~380	350~440	
RHP400	140~175	185~230	225~280	255~320	275~345	295~370	325~430	360~490	410~560	465~630
RHP500	175~220	230~290	280~350	320~400	345~430	365~455	405~535	445~605	510~700	580~790
RHP800	260~335	325~425	385~500	435~545	470~600	495~730	545~800	600~950	690~1050	785~1200

Note: the production capacity of less than 4% moisture content, do not contain clay, feed particle size grading, appropriate materials is less than the discharging mouth of the feeding amount is less than 10%, feeding uniformly distributed around the crushing cavity, loose material density of 1.6 t/m after the rocks when open circuit design by quantity. Under the condition of closed circuit operation, equipment capacity by 15% to 30% higher than open operation. Due to the selected device of eccentricity, crushing ratio, feeding the hardness and the grain size of feed, feed moisture content, such as hydraulic crusher production capacity will be influenced, so the specific application, please consult us further.



Product appearance and weight

DIMENSIONS	RHP300	RHP400	RHP500	RHP800
A(mm)	328	240	425	722
B(mm)	2207	2370	2730	3702
C(mm)	2020	2470	2650	3450
D(mm)	1347	1645	1760	2225
E(mm)	1865	2055	2290	3538
F(mm)	1078	1308	1535	1863
G(mm)	85	150	125	159
H(mm)	660	830	882	1130
Diameter of the main frame discharging mouth	1470	1726	2040	2420
Total weight of crusher	15810	23000	33150	68650
Fixed cone, cone lining board, adjusting cap, hopper(kg)	3525	4800	7200	17350
Dynamic cone, cone plate and feed plate(KG)	2060	3240	5120	10800
Power (kw)	200~250	315	315~400	630
Shaft rotational speed (rpm)	700~1200	700~1000	700~950	700~950

1. Minimum discharging mouth means without causing adjusting ring beats can achieve the minimum discharge mouth, it according to the ore properties and operating conditions of different change
2. Is the mouth of the minimum discharge corresponding tension side feeding mouth
3. Depending on the equipment specification and material, feeding size for " B" 80% of the range

Feed opening size(mm)

Model	Crusher cavity	Standard		Short head type	
		Minimum discharge port	Tight edge feeding port	Minimum discharge port	Tight edge feeding port
RHP300	EF			6	25
	F	13	107	6	22
	M	17	150	8	53
	C	19	211	10	77
	EC	25	233		
RHP400	EF			6	52
	F	14	111	8	51
	M	20	198	8	52
	C	25	252	10	92
	EC	30	299		
RHP500	EF			6	53
	F	16	133	8	52
	M	20	204	10	57
	C	25	286	13	95
	EC	30	335		
RHP800	F	16	219	5	33
	M	25	267	10	92
	C	32	297	13	155
	EC	32	353		

Note: EF = finely type, type F = finely, C = midplane model, M = coarse cavity type, EC = coarse cavity type



Product overview

RVSI series vertical shaft crusher is a kind of fine crusher which has made technological improvement on the traditional crushing concept, and has also become a sand machine (or integer machine). Its principle is: material have equipment into the upper center, among equipment, high-speed rotating impeller by high-speed rotating impeller speed has launched a number of high-speed mouth, outside the impeller and the impeller around the low speed of material or equipment turbine cavity liner compound movement, impact, friction, as well as the material after broken grinding, free fall discharge. The machine has the advantages of strong adaptability, low cost, large quantity, good particle shape of finished products, and has been widely used in many fields at home and abroad

Product advantage

- Thin oil lubrication mode, equipped with special hydraulic station; Equipped with air cooler to use a wider environment; Low temperature automatic heating function; Oil pressure, oil temperature, liquid level protection function; It effectively reduces the high temperature generated when the bearing is working and improves the service life of the bearing. Grease lubrication can also be configured according to user requirements.
- It has two crushing modes of "stone to stone" and "stone to iron". The two modes can be exchanged by replacing simple parts. Thus meet the needs of material crushing, sand making and shaping under various working conditions
- The impeller body adopts four or more launching ports of the new equipment, so that the passing quantity of materials is higher; Scientific and reasonable impeller body internal material acceleration channel, so that the material crushing to obtain more kinetic energy, better crushing effect.
- According to different materials and working conditions, the impeller linear velocity of 65~85m/s is matched to make the crushed materials more close to the cube structure. The fineness modulus of sand making is smaller; Optimize particle size distribution of finished sand.
- Equipped with top lifting device, maintenance is faster and more convenient (optional)

Application field/For the material

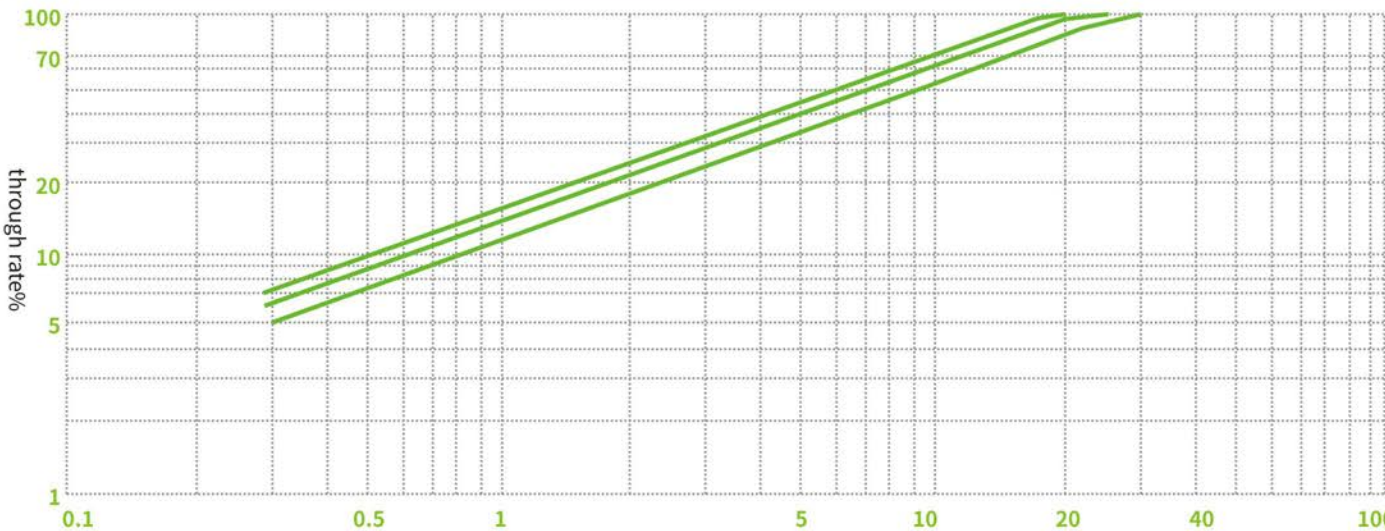
Application field: RVSI series vertical shaft crusher is widely used in sand aggregate and other industries of medium and soft materials such as limestone, pebble, granite, basalt and other materials of hydropower sand aggregate production, as well as iron ore, molybdenum ore, gold ore and other mineral processing industry production

Applicable materials: limestone, pebbles, granite, basalt, iron ore, molybdenum ore and gold ore production

Technical parameters

Model	Feeding size (mm)		power(kw)	through put (t/h)	
	sand making	foaming		sand making	foaming
RVSI-850	<30	<40	2×75~2×132 (Single motor160~250)	160~180	200~300
RVSI-950	<35	<45	2×160~2×200 (Single motor315~400)	260~280	370~450
RVSI-1100	<45	<55	2×200~2×250	340~370	410~640
RVSI-1200	<50	<60	2×280~2×315	450~580	545~580

Grain size characteristic curve



Note: 1. The linear velocity is 75m/s, 70m/s and 65m/s from top to bottom.

2. The production capacity is based on medium-hardness limestone with loose specific gravity of 1.6t/m³, and is affected by feeding particle size, grading, water content, rock properties and other factors.



Product overview

RNP series impact crusher is a new type of impact crusher developed and produced on the basis of absorbing and digesting advanced technology at home and abroad

Application field/For the material

Application field: Water conservancy, hydropower, high-speed rail, building materials mines, construction waste and other coarse, medium and fine crushing operations

For the material: The compressive strength of limestone, granite, shale, bluestone, coal, river pebble, construction waste and so on is not more than 250mpa

Product advantage

- Suitable for open circuit or closed circuit production of medium and fine crushing
- The shape of the finished material is closer to the cube
- Match reasonable rotor speed for different materials and different finished product sizes
- The optional hydraulic system makes the adjustment and maintenance more convenient and fast
- The optional third counter plate makes the crushing ratio greater

Technical parameters

	RNP1313	RNP1415	RNP1620	RNP2023	RNP1213	RNP1315	RNP1520
Feeding granularity(mm)	800	800	800	800	400	400	400
Discharging granularity(mm)	0~200	0~200	0~200	0~200	0~30	0~30	0~30
Processing power(t/h)	320~480	360~600	550~930	1150~1900	150~280	220~350	350~550
Power(kw)	200	250	2X200~2X250	2X500~2X650	200	250	2X200~2X250

Note: The processing capacity of the above data is calculated according to the limestone with loose density of 1.6t/m³. The maximum feeding refers to the maximum allowable range. If the feeding is too large, the impact will be serious, so moderate feeding is generally appropriate



Product overview

2PG series roller crusher is a new type of crusher developed by our company for rock and mineral fine crushing and ultra-fine crushing operation

Application field/For the material

Application field: cement, metallurgy, chemical industry, electric power, coal and other industries

Applicable materials: limestone, granite, shale, river pebbles with compressive strength not greater than 250mpa

Product advantage

- Easy to remove, double cone roller
- Equipped with hydraulic adjustment system, more convenient adjustment and longer life
- The bearing design and maintenance of the new structure are more convenient and fast
- The overall steel frame design and installation are simple

Technical parameters

model	Feeding granularity(mm)	Discharge size (mm)	processing power(t/h)	Power(kw)
2PG0909	<45	2~10	11~45	3x37
2PG1210	<45	2~10	15~60	2x45
2PG1510	<55	2~10	80~150	2x132
2PG1810	≤60	2~10	160~230	2x220

Note: The processing capacity of the above data is calculated based on the medium hardness limestone with a loose gravity of 1.6t/m³ of the material, with mud and water content not exceeding 5%

ZSW SERIES VIBRATING FEEDER



Product overview

ZSW Series Vibrating Feeder is designed based on the principle of exciting force generated by two eccentric shafts. It is mainly used for continuous and even feeding before primary crushing. Besides feeding, at the same time, it works as pre-screening. The pre-setting gap between grizzly bars avoid unnecessary power consumption of the following crushers, which improves the crushing efficiency. ZSW Series Vibrating Feeder is widely used in feeding

Application field/For the material

Application field: Widely used in metallurgy, mineral processing, building materials, abrasive and chemical industries such as crushing, screening joint equipment

For the material: Limestone, granite, marble, basalt, iron ore, pebble, shale, bluestone, coal, construction waste and so on

Product advantage

- The cascade bar drop is large, it is not easy to block the material, the material is quick, and has good pre-screening effect
- Modular bar design, convenient bar clearance adjustment
- The frequency can be adjusted by frequency conversion controller, which is convenient to control the feeding amount of the first crusher
- Thin oil lubrication structure, after the first filling, later regular replacement can be
- Enclosed shaker to prevent dust pollution

Technical parameters

	ZSW380X95	ZSW420x110	ZSW490x110	ZSW1360	ZSW1560	ZSW1860	ZSW2160
Feeding granularity(mm)	500	580	580	750	900	1050	1200
Speed(r/min)	500~800	500~800	500~800	500~800	500~800	600~850	600~850
Processing power(t/h)	~150	150~280	150~350	220~560	260~620	400~1000	550~1250
Power(kw)	11	15	18.5	30	37	45	45



Product overview

YA series vibrating screen is my company combined with the production site optimization design of a new type of vibrating screen, can be widely used and mining, building materials and other industries a variety of loose minerals and rock screening operations, according to customer needs, to provide two, three layer series of vibrating screen.

Application field/For the material

Application field: Widely used in metallurgy, coal mining, building materials, mineral processing, abrasives and chemical industry crushing, screening combined equipment

For the material: Limestone, granite, marble, basalt, iron ore, river pebbles, shale, bluestone, coal, construction waste and so on

Product advantage

- The vibrating screen adopts eccentric shaft and eccentric block structure, which makes the amplitude adjustable and ensures higher screening efficiency
- Using thin oil lubrication structure, a filling, regular replacement of lubricating oil can be
- Can be assembled with different aperture modular screen
- The side plate is bent and connected with the beam with high strength bolts. The whole screen has no welding structure
- Vibration spring adopts rubber spring, longer service life

Technical parameters

	YA2170	YA2470	YA3070	YA3080	YA3380	YA3680
Layer	2/3/4	2/3/4	2/3/4	2/3/4	2/3	2/3
Mesh size(mm)	3~150	3~150	3~150	3~150	3~150	3~150
Double amplitude(mm)	6~9	6~9	6~9	6~9	6~9	6~9
Vibration time(r/min)	850	850	850	850	850	850
Feeding granularity(mm)	≤200	≤200	≤200	≤200	≤200	≤200
Production capacity(t/h)	100~750	150~950	150~1100	150~1100	150~1200	200~1200
Power(kw)	37/45/45	37/45/45	45/55/2X37	2x30/37/45	2X37	2X45



Product overview

ZKX series linear screen is our company combined with the production site optimization of a new linear screen, can be widely used in mining, building materials and other industries of various loose minerals and rock desliming, dehydration, sieve out of the medium

Application field/For the material

Application field : Widely used in mining, building materials, construction and other industries

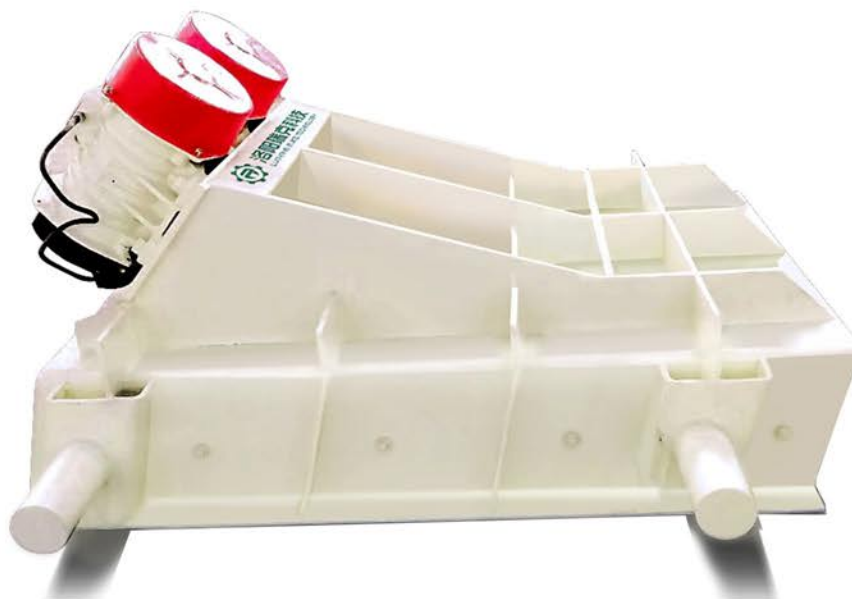
For the material: Limestone, granite, marble, basalt, iron ore, river pebbles, shale, bluestone, coal, construction waste and so on

Product advantage

- Screen machine adopts vibration motor and adjustable amplitude, to ensure higher screening efficiency
- Vibration spring adopts rubber spring, longer service life
- The side plate is bent and connected with the beam with high strength bolts. The whole screen has no welding structure
- Can be assembled with different aperture modular screen

Technical parameters

Specifications	Layers	Aperture size (mm)	Double amplitude (mm)	Vibration times (r/min)	Maximum feed size (mm)	Production capacity (t/h)	Power (KW)
ZKX1245	1	0.25~50	6-9	970	≤150	10~200	4x3
ZKX1260	1	0.25~50	6-9	970	≤150	12~280	4x3
ZKX1437	1	0.25~50	6-9	970	≤150	10~210	4x3
ZKX1845	1/2	0.25~50	6-9	970	≤150	16~324	4x3.7/5.5
ZKX1860	1/2	0.25~50	6-8	970	≤150	20~380	4x5.5/6
ZKX2160	1	0.25~50	6-8	970	≤150	20~500	4x6/7.5



Product overview

ZG series motor vibration feeder is a continuous and uniform feeding equipment with vibration motor as excitation

Application field/For the material

Application: Widely used in metallurgy, coal mining, building materials, mineral processing, abrasives and chemical industry crushing, screening combined equipment

Applicable materials: limestone, granite, marble, basalt, iron ore, river pebble, shale, bluestone, coal, construction waste and so on

Product advantage

- Simple structure, stable work
- High production capacity, small footprint, high efficiency
- Easy to install and maintain

Technical parameters

	ZG300	ZG400	ZG500	ZG600
Feed rate (t/h)	300	400	500	600
Maximum feeding size (mm)	200	250	300	350
Double-amplitude (mm)	3~5	3~5	3~5	3~5
Power (kw)	2X1.1	2X1.5	2X1.5	2X2



Product overview

YD series wheeled mobile crushing screening stations, is the raw material warehouse, bar feeder, coarse crushing equipment, multilayer vibrating screen, crusher, finely equipment, portable belt conveyor, sand washing machine, electrical control system is equal to the standard wheel can be towed trailer combination of design as a whole is linkage mobile crushing screening line of production, has extensive adaptability and advantages, It is mainly used for crushing and screening operations in expressway, railway, metallurgy, mining, building materials and other industries that need to move frequently and transfer to move.

Product advantage

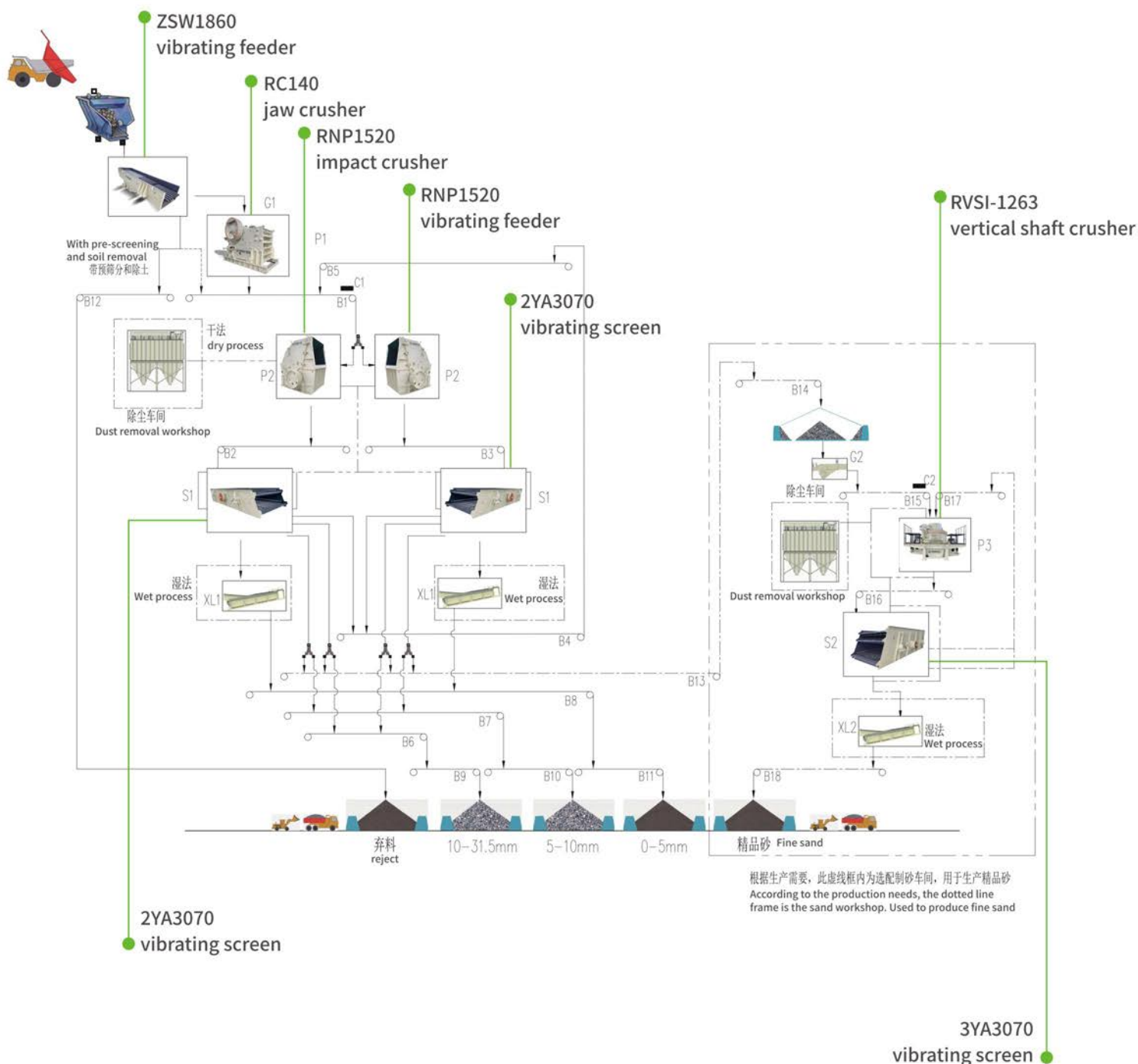
- Standard wheel axle and traction steering shaft are adopted, which is highly maneuverable and convenient for road transportation and transfer
- Complete set, quick installation, electricity can run production
- Each crushing unit has light weight, short length, strong adaptability, high mobility, easy to move and flexible combination
- Equipped with high performance, high efficiency, multi-functional special vehicle equipment, large output, high efficiency, reliable performance
- The configuration combination is flexible. According to different engineering needs, it can be configured into a three-stage crushing and screening system combining coarse crushing unit, medium crushing unit and fine crushing unit, or a single unit can run independently
- The operation control is simple, and it can be integrated in one section or interlocked in several sections

Technical parameters

Model			YD-120	YD-150	YD-200
Basic configuration					
Product particle size (mm)			0~30	0~30	0~30
Production capacity (t/h)			80~120	120~150	150~200
Coarse crushing section	Feeder		ZSW380X95	ZSW420X110	ZSW490X110
	Coarse crushing equipment		RC80	RC96	RC106
Medium crushing section	Vibrating screen		3YA1860	3YA2160	3YA2460
	Medium crushing equipment	Medium hard	RNP1110	RNP1213	RNP1315
		ultrahard	RGP100	RGP11	RGP300
Auxiliary equipment			Mobile belt machine, hydraulic legs, iron remover, electrical control system, etc		

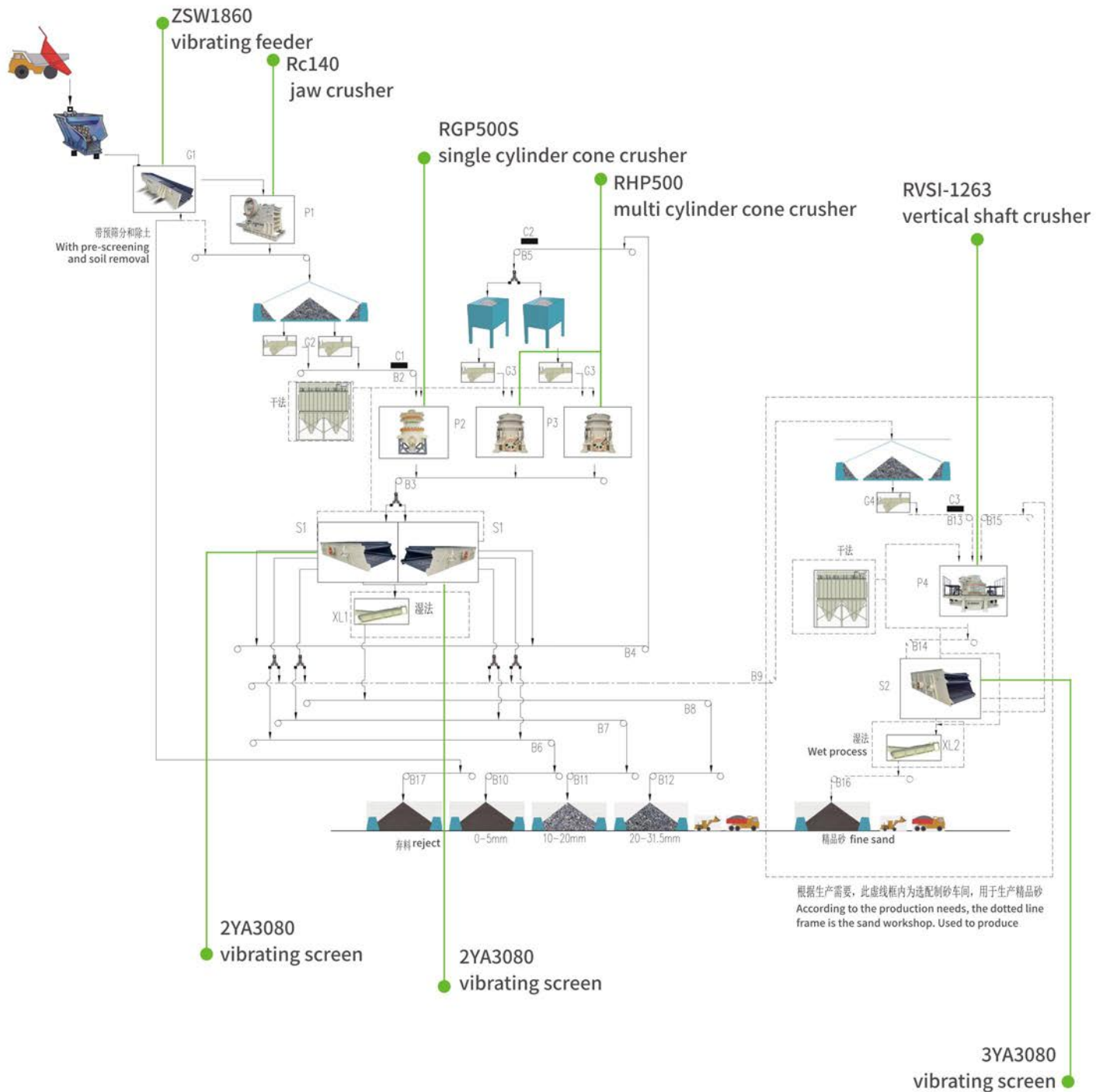
SANDSTONE AGGREGATE PROCESSING SYSTEM SCHEME

500 TONS/HOUR OF LIMESTONE ROCK SAND AGGREGATE PRODUCTION PROCESS EQUIPMENT CONFIGURATION



SANDSTONE AGGREGATE PROCESSING SYSTEM SCHEME

500 TONS/HOUR GRANITE AND ROCK-LIKE SAND AGGREGATE PRODUCTION PROCESS EQUIPMENT CONFIGURATION



01

PRODUCTION SITE IN SHANGLUO,
SHAANXI PROVINCE

Raw material: diabase

Capacity requirement:

1200 tons/hour aggregate and machine-made sand;

Dust removal method: dry and wet combination,
machine-made sand and fine aggregate washing

Use space: 70m×200m.

Concentrate specifications (mm) :

0 ~ 5 (sand), 5 ~ 10, 10 ~ 15, 15 ~ 20;

General material specifications (mm) :

0 ~ 5 (sand), 5 ~ 10, 10 ~ 20, 20 ~ 30 (31.5)

Reserved size (mm) :

Railway slag (28 ~ 63 or 30 ~ 70)

1200 tons of diabase hard rock production
line equipment configuration

- ◆Two Set of ZSW1860 Feeder
- ◆Two Set of RC140 Jaw Crusher
- ◆Two Set of RGP500S coarse crushing single
cylinder hydraulic Cone Crusher
- ◆four set of RGP500 fine crushing single cylinder
hydraulic cone crusher
- ◆Two Set of PLS-1200 Vertical Impact Crusher
- ◆Four Set of 3YK3080 Vibrating Screen
- ◆Two Set of 3YK3680 Vibrating Screen
- ◆Two Set of ZG600 variable frequency Feeder
- ◆Two Set of 2XL-914 spiral Sand Washing Machine
- ◆Two Set of ZKB2160 Dehydration Vibrating Screen





02

PRODUCTION SITE IN YIMA, HENAN

Raw materials: pebbles, basalt

Maximum feed :910mm

Design scale :600 tons/hour

Finished product specifications (mm) :

0~5mm, 10~20mm, 20~30 (31.5) mm

600 tons per hour production line equipment configuration

- ◆ One set of ZSW1860 Feeder
- ◆ Two Set of ZG140~180 Feeder
- ◆ One Set of RC140 Jaw Crusher
- ◆ One Set of RGP500S coarse crushing single cylinder hydraulic Cone Crusher
- ◆ Two Set of PFQ1320 Impact Crusher
- ◆ Two Set of PLS-1000 II Sand Maker
- ◆ One Set of 2YA2470 Vibrating Screen
- ◆ Four Set of 3YA3080 Vibrating Screen
- ◆ Two set of 2XL-914 spiral sand washing machine





03

PRODUCTION SITE IN QINGHAI PROVINCE

Raw material: Limestone

Capacity requirement: about 1000 tons/hour

Finished product specifications:

0-3mm, 3-5mm, 5-10mm,

10-20mm, 20-31.5mm,

31.5-50mm, 50-80mm, 80-120mm;

Equipment configuration

- ◆ One set of ZSW2160 vibrating feeder
- ◆ One set of RC160 jaw crusher
- ◆ One set of PE900*1200 jaw crusher
- ◆ Two sets of PE750*1060 jaw crusher
- ◆ Four sets of PEX300*1300 fine jaw crusher
- ◆ Two sets of RNP1315 impact crusher
- ◆ One set of 3YA3680 vibrating screen
- ◆ One set of 2YA3070 vibrating screen
- ◆ One set of 3YA2470 vibrating screen



04

PRODUCTION SITE IN GUANGXI

Raw material: granite

Maximum particle size: 800mm

Design scale: 350T /h

Finished product specification (mm) : 0~31.5mm

Equipment configuration

- ◆ One set of ZSW1360 Feeder
- ◆ One Set of RC125 Jaw Crusher
- ◆ One Set of RGP300S single cylinder hydraulic Cone Crusher
- ◆ One Set of RHP300 multiple cylinder hydraulic Cone Crusher





05

PRODUCTION SITE IN YUNNAN PROVINCE

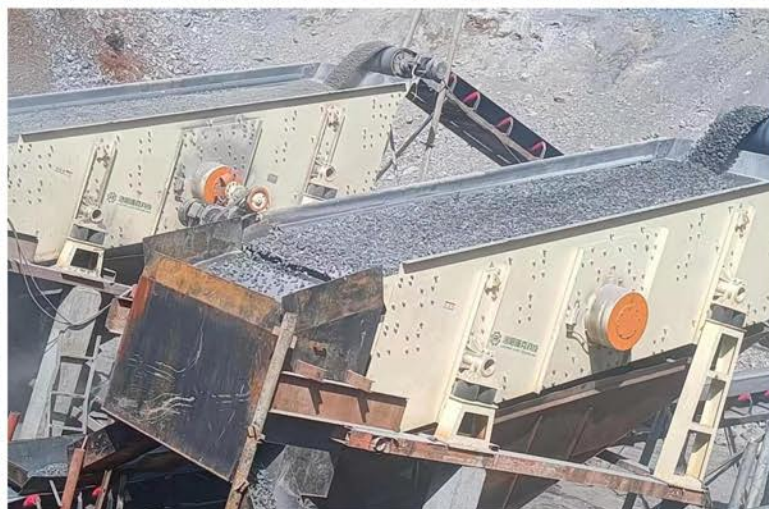
Raw material: diabase

Finished product specifications:

0~5mm, 5~10mm, 10~20mm, 20~30mm

Equipment configuration:

- ◆ One set of RHP500 multi cylinder cone crusher
- ◆ One set of RVSI1263 vertical shaft crusher
- ◆ Two sets of 3YA2470 vibrating screen





06

IRON ORE PRODUCTION SITE IN SHANXI

Raw material: iron ore

Capacity requirement: 200 tons/hour

finished material $\leq 20\text{mm}$

Equipment configuration

◆ One set of ZSW4911 Feeder

◆ One Set of DHKS4230 Jaw Crusher

◆ Two Set of RHP300 multiple cylinder
hydraulic Cone Crusher



07

PRODUCTION SITE IN MACHENG, HUBEI

Raw material: granite

Design scale: 230T /h

Equipment configuration

◆ One Set of RHP400 multiple cylinder



08

PRODUCTION SITE IN SICHUAN

Raw material: sandstone

Capacity requirement: 700 tons/hour

Maximum particle size: 1000mm

Finished product specifications:

0~5mm, 5~10mm,

10 ~ 20 mm, 20 ~ 31.5 mm

Equipment configuration

- ◆ One set of RC160 crusher
- ◆ Two sets of RVS11263 vertical shaft crusher
- ◆ One set of 2PG1210 roll crusher





09

GUANGXI PROVINCE PRODUCTION SITE

raw material: limestone
Processing capacity:
850~900 tons/hour
Main finished material: 45~90mm
accounting for 450~500 tons
Equipment configuration
◆ One set of RGP500S single
cylinder cone crusher
◆ One set of RHP500 multi cylinder
cone crusher





10

GUANGDONG PRODUCTION SITE

Raw material: Granite

Capacity requirement: 250 tons/hour

Finished product specifications:

0~3mm, 3~5mm, 5~10mm, 10~20mm, 20~31.5mm

Equipment configuration

- ◆ One set of RVSI-1150 vertical shaft crusher
- ◆ One set of 4YA3080 vibrating screen





11

PRODUCTION SITE IN LUOYANG, HENAN PROVINCE

Raw material: Molybdenum ore

Capacity requirement: 200 tons/hour

Equipment configuration

- ◆ One set of RC106 jaw crusher
- ◆ One set of RGP300S single cylinder hydraulic cone crusher
- ◆ One set of RHP300 multi-cylinder hydraulic cone crusher



12

PRODUCTION SITE IN YIYANG, HENAN

Raw material requirements: river pebbles

Capacity requirement :150~200 tons/hour

Equipment configuration

- ◆ One set of ZSW3895 Feeder
- ◆ One Set of PE600x900 Jaw Crusher
- ◆ One Set of HP300 multiple cylinder hydraulic Cone Crusher
- ◆ One Set of 4YA2470 Vibrating Screen

13

PRODUCTION SITE IN FANSHAN, SHANXI

Raw material requirements: granite

Capacity requirement :500 tons/hour

Equipment configuration

- ◆ Two Set of RGP500 single cylinder hydraulic Cone Crusher
- ◆ One Set of RGP300 single cylinder hydraulic Cone Crusher



14

PRODUCTION SITE IN XINYANG

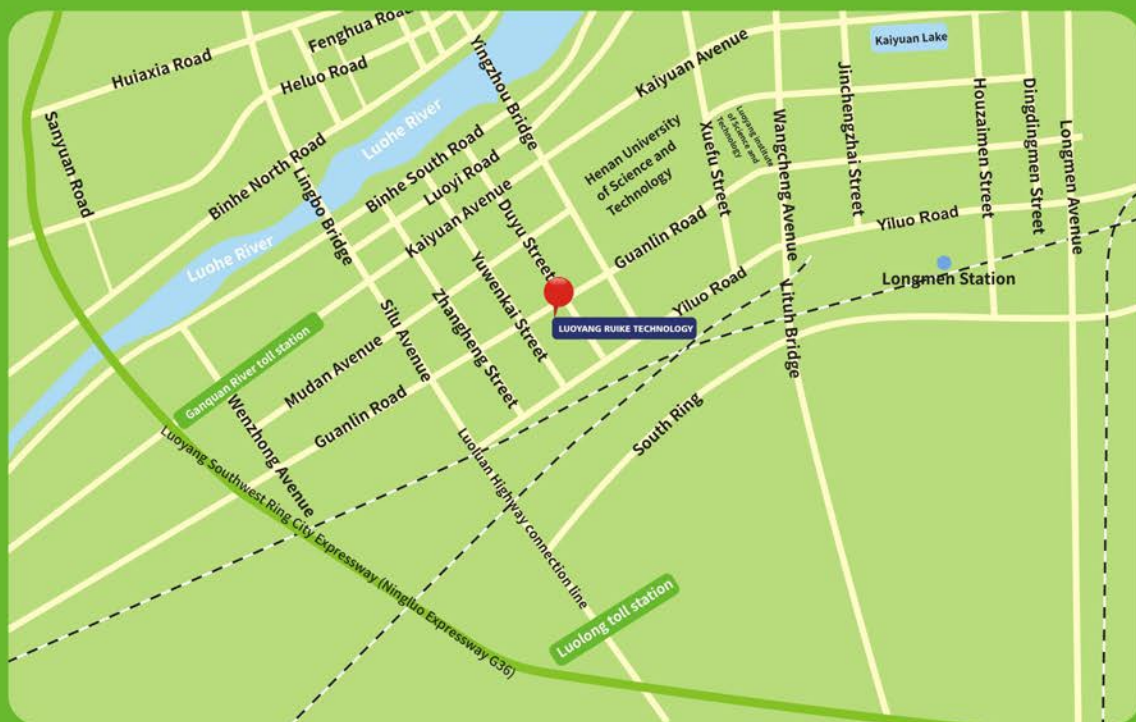
Raw material: Granite

Capacity requirements: 300 tons/hour

Finished product specifications: $\leq 30\text{mm}$ **Equipment configuration**

- ◆ Two sets of RHP500 multi-cylinder hydraulic cone crusher
- ◆ One set of RGP500S single cylinder hydraulic cone crusher





RUIKE

LUOYANG RUIKE CYCLIC TECHNOLOGY CO.,LTD

Add: No.280 Guanlin street, Luolong District ,Luoyang, Henan ,China

TEL: 15225439821 0379-60119131

E-MAIL: luoyangruike@163.com

<http://www.lyrkkj.com>



FOLLOW RUIKE,STAY TUNED FOR MORE